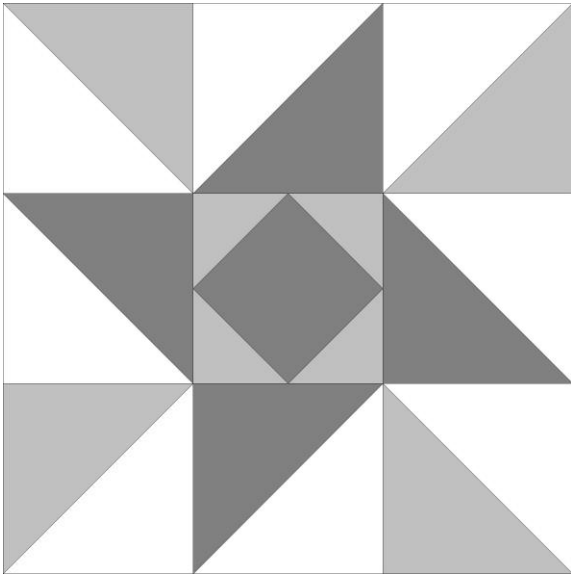

2015 – 2016 Mystery BOM

Month Six - February 2016

Our sixth block is pieced block titled "Indiana Puzzle". This will be a 6" finished block. (6-1/2" unfinished)



You will need to make five blocks for the quilt..

Your fabric choices this month are to use light (background), medium and medium dark fabrics as show in the greyscale drawing.

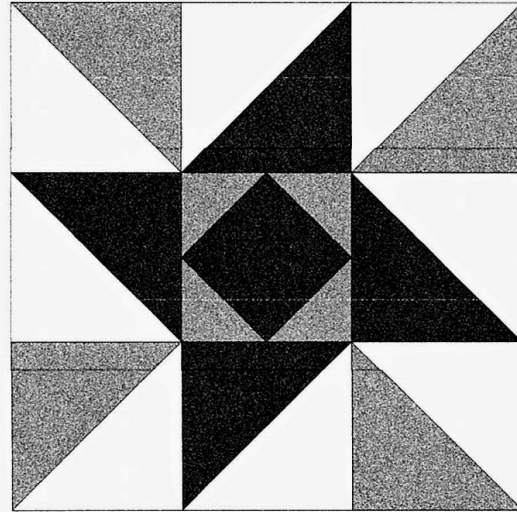
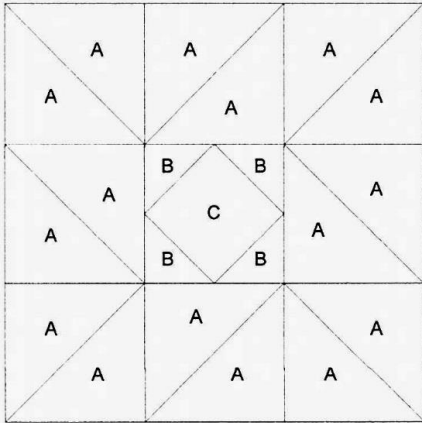
The printout from EQ of this block uses 2-7/8" squares cut once on the diagonal. I prefer to cut 3" squares, piece my half-square triangles and trim to a final size of 2-1/2".

Not every block needs to be the same colors, but they can be. It's your choice.

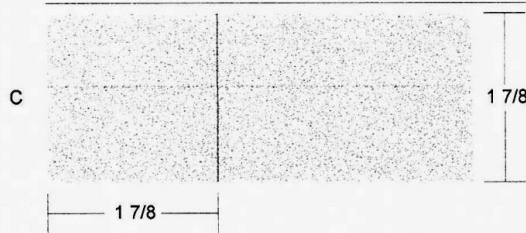
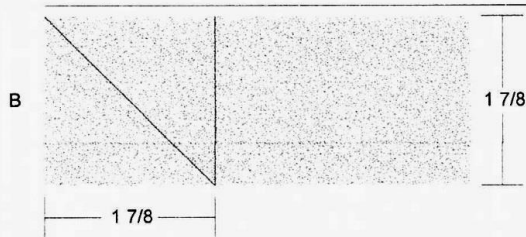
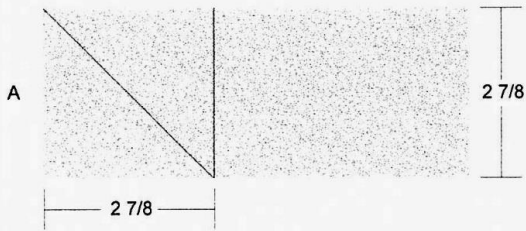
Have fun playing with the colors!

Indiana Puzzle

Key Block (41/100 actual size)



Cutting Diagrams



Patch Count



4 patches



8 patches



4 patches



4 patches



1 patch

